

We are the National Agency Education for Europe at the Federal Institute for Vocational Education and Training - NA at BIBB for short. On behalf of the Federal Ministry for Education, Family Affairs, Senior Citizens, Women and Youth (BMBFSFJ), we are responsible for implementing the European Erasmus+ programme in VET and adult education. In addition, we fulfil numerous other European and international tasks in both areas of education. We work closely with the EU Commission and at national level with ministries, federal states, social partners, associations, chambers, companies, universities and educational institutions.

You can find more information at:

[www.na-bibb.de](http://www.na-bibb.de)

#### Legal Notice

National Agency Education for Europe  
at the German Federal Institute for Vocational  
Education and Training  
(NA at BIBB)  
Friedrich-Ebert-Allee 114-116  
53113 Bonn  
phone: 0049 (0)228 / 107-1608  
Responsible for content:  
Berthold Hübers  
Updated English Translation: May 2025


Design: Blueberry,  
Agentur für Design & Markenkommunikation,  
[www.go-blueberry.de](http://www.go-blueberry.de)


Image sources:  
AdobeStock.com: Halfpoint (p.1), shock (p.5),  
Southpoint ( p.7), Fizkes (p.9):  
Shutterstock.com: Bioraven (p.5/7/8)

Printed on Antalis Digicolor



 [www.na-bibb.de](http://www.na-bibb.de)

 Nationale Agentur Bildung für Europa

 EPALE – Deutschsprachiges Netzwerk der  
Erwachsenenbildung in Europa



Funded by:



NCP Agenda for Adult Learning, Erasmus +, EPALE

## European Adult Education in Germany

[www.na-bibb.de/en](http://www.na-bibb.de/en)

Higher education  
School education  
Vocational education and training

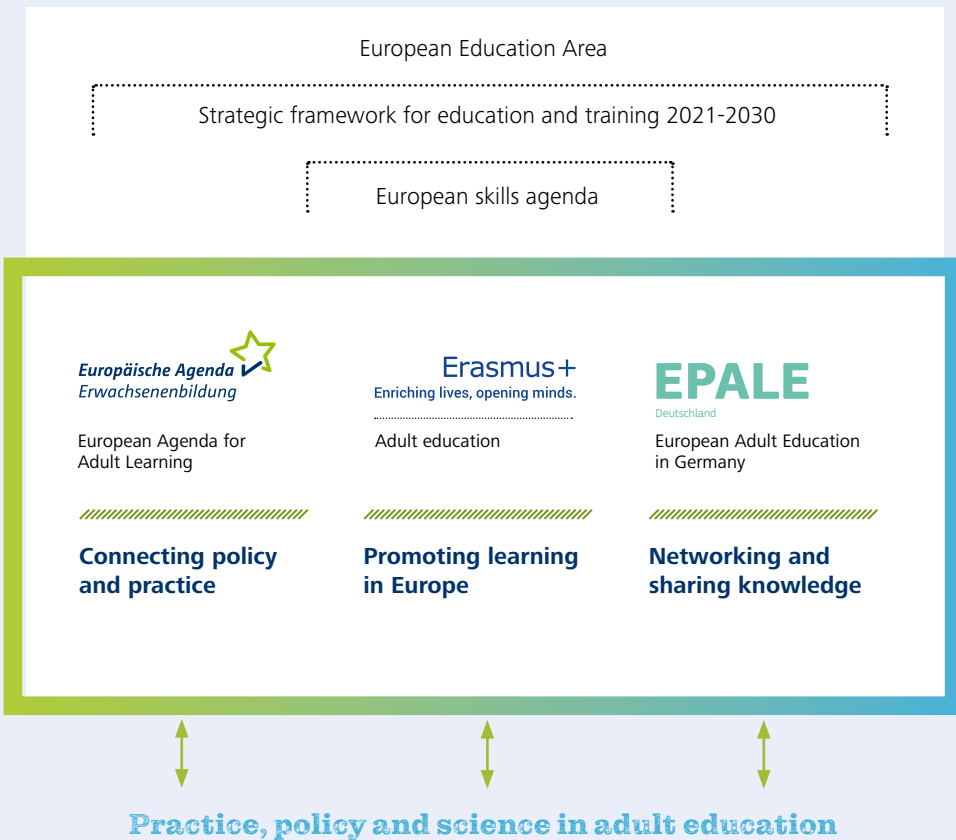
**Erasmus+**  
Enriching lives, opening minds.

**Adult education**



The field of European adult education in Germany has three goals in co-operation with experts from politics, science and practice:

**to inform. to promote. to network**



# European adult education

**in Germany**

# A

Adult education is one of the main pillars of the European Education Area and makes an active contribution to shaping a resilient and inclusive Europe. To implement these goals, the two National Coordination Offices „European Agenda for Adult Learning“ and „EPALE“ as well as the Erasmus+ Programme in the field of Adult Education are located in the National Agency at the Federal Institute for Vocational Education and Training. Together they form the „European Adult Education“ sector in Germany.

## **NCP Agenda for Adult Learning –**

The National Coordination Point of the European Agenda for Adult Learning (NCP EAAL) provides information on European objectives and priorities in the field of adult education and supports its national implementation.

**Erasmus+ Adult Education –** Erasmus+ is the EU’s programme to support education, training, youth and sport in Europe. In the current Erasmus+ funding period (2021-2027) in Germany, more than 8,000 people from adult education have already been able to take part in study visits abroad and numerous organisations have benefited from cooperation partnerships.

**EPALE –** On EPALE, the e-platform for adult education in Europe, those active in adult education can exchange information on specialised topics, share information, network and find project partners across Europe.

# European Agenda for Adult Learning

## NCP Agenda for Adult Learning

In November 2021, the Council of the European Union adopted the recommendation for a „New European Agenda for Adult Learning 2021-30“. It provides an educational policy framework for Europe and sets common goals for general adult education and vocational training. The main objective of the Agenda is to promote the role of adult education in the participating countries. To implement the European Agenda and strengthen the importance of adult education in Europe, national coordination points have been established across Europe. In Germany, this National Coordination Point works on behalf of the European Commission and the Federal Ministry for Education, Family Affairs, Senior Citizens, Women and Youth (BMBFSFJ).

### Priorities of the European policy on adult education at the national level

- > promoting the participation of adult learners in lifelong learning
- > strengthening basic education
- > developing future skills

### We, as the National Coordination Point (NCP):

- > provide information on European goals and priorities in adult education
- > together with a monitoring committee, define the national priorities for the implementation of the European Agenda for Adult Learning in Germany
- > initiate and support mutual European (learning) processes,
- > contribute to the networking of European and national stakeholders and institutions.



### Feel free to contact us, if you

- > want to be informed about European adult learning developments and national priorities,
- > are interested in (joint) events aimed at sharing European and national learning and expertise on key issues,
- > want to connect with us or are looking for European cooperation partners

Further information on the NCP European Agenda for Adult Learning can be found at:

 [www.agenda-erwachsenenbildung.de](http://www.agenda-erwachsenenbildung.de)



# Erasmus+

## Adult Education

Erasmus+ Adult Education is open to all organisations offering general adult education. It supports the further training of learners and educators, cooperation with other organisations, networking and internationalisation. The aim is to strengthen European values and make our societies more inclusive, greener and fit for a digital future. The programme pays particular attention to giving disadvantaged people easy access to Europe.

Information on Erasmus+ adult education can be found at:

 [www.na-bibb.de/  
informieren](http://www.na-bibb.de/informieren)

### Key action 1

**With the help of Erasmus+, adult education organisations can support learners and staff on study visits abroad.**

Key action 1 is aimed in particular at **learners with fewer opportunities**. European learning experiences promote participation and have a positive impact on personal skills.

Your **staff**, for example, can learn about modern, digital teaching methods on a course in Denmark or experience the implementation of inclusive teaching models during a job shadowing programme in Austria. A stay abroad can enhance your staff's skills in many ways.

### Key action 2

**As part of a "Partnership for cooperation", organisations active in adult education can work together across national borders with Erasmus+ funding:**

**Small-scale Partnerships in adult learning and education: Get started with Erasmus+!**

Even with just one partner from another country participating in Erasmus+, you can apply for a project and exchange ideas on adult education topics across national borders.

**Cooperation partnerships in adult learning and education: larger projects!**

Involve at least three organisations from three countries to develop and/or transfer innovative educational practices in Europe.



Erasmus+  
Enriching lives, opening minds.

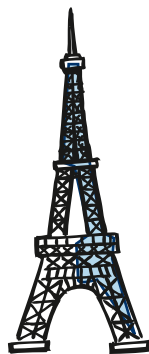


**The online community for everyone working in adult and continuing education.**

The ePlatform for Adult Education in Europe (EPALE) is a multilingual, open-membership online community dedicated to adult and continuing education across Europe.

EPALE is the virtual meeting place for all those professionally involved in adult learning and continuing education and training:

- > **Teachers**
- > **Project staff**
- > **Decisionmakers**



### What EPALE can do for you!

- > Gain access to Europe's largest open-membership adult education community.
- > Benefit from the latest knowledge and expertise shared by our community.
- > Connect and network with over 170,000 colleagues across Europe.
- > Make yourself and your work visible.
- > Actively shape adult education in Europe through your contributions and comments.
- > Exchange ideas with the European community in your own language.

### Who is behind EPALE?

EPALE is funded by the European Commission as part of the EU Erasmus+ programme. Nearly 40 teams across Europe work to support and strengthen the community.

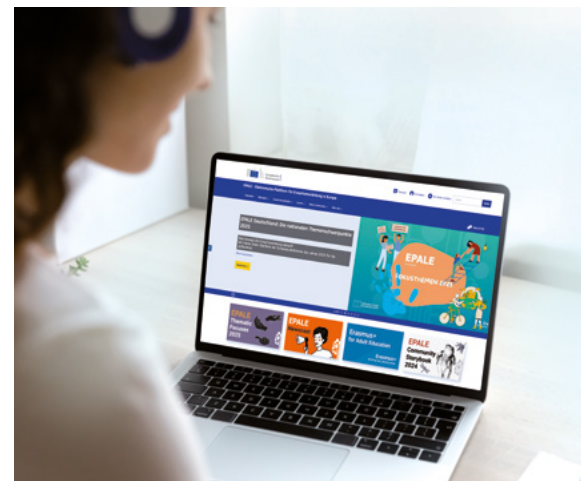
The German EPALE team is located at the National Agency „Education for Europe“ at the Federal Institute for Vocational Education and Training (NA at BIBB). We therefore work very closely with the Erasmus+ Adult Education Programme and the European Agenda for Adult Learning. Together we support and strengthen adult education in Germany and Europe.

Be inspired and begin your journey through Europe with EPALE today!

**Join the European adult education community!**

 <https://epale.ec.europa.eu/en>

Use the EPALE Mobile App! Simply scan and download the QR codes opposite.



Apple



Android



# Our common goals:

## NCP Agenda for Adult Learning, Erasmus+, EPALE

The NCP Agenda for Adult Learning, Erasmus+ Adult Education and EPALE are committed to supporting the goals and initiatives of European adult education. The NCP European Agenda for Adult Learning provides insights into European education policy priorities and how they shape national discussions.

Erasmus+ Adult Education puts these priorities into action through projects and collaborations. The EPALE platform supports every stage of project planning, implementation, and dissemination. Additionally, EPALE makes it possible to find partner organisations, build a network and gain and share knowledge with others

### Our Goals for European Adult Education in Germany:

- > Strengthening adult education as the fifth pillar of education, contributing to Europe's goal of increasing participation in lifelong learning.
- > Raising awareness of European policy developments and benchmarks in adult education.
- > Encouraging collaboration and exchange among stakeholders at all levels – European, national, regional, and local.
- > Promoting inclusion, equal opportunities, diversity, and social justice through a strong adult education sector, both nationally and across Europe.
- > Inspiring multipliers, stakeholders, professionals from academia and practice, training providers, associations, educators, and learners to engage with European topics and collaborations.

If you are interested in further information, please contact us directly:

NCP European Agenda for Adult Learning (NCP EAAL):  
[www.agenda-erwachsenenbildung.de](http://www.agenda-erwachsenenbildung.de)  
E-mail: [agenda-erwachsenenbildung@bibb.de](mailto:agenda-erwachsenenbildung@bibb.de)

ERASMUS+ Adult Education  
[www.na-bibb.de/informieren](http://www.na-bibb.de/informieren)  
Key action 1: Mobility  
E-mail: [mobilitaet-erwachsenenbildung@bibb.de](mailto:mobilitaet-erwachsenenbildung@bibb.de)  
Key action 2: Partnerships for cooperation  
E-mail: [partnerschaften-erwachsenenbildung@bibb.de](mailto:partnerschaften-erwachsenenbildung@bibb.de)

EPALE  
<https://epale.ec.europa.eu/en>  
E-Mail: [epale@bibb.de](mailto:epale@bibb.de)

### Social-Media

Find news from the German adult education community and stay informed about national and European topics.

 **EPALE – Deutschsprachiges Netzwerk der Erwachsenenbildung in Europa**

 **Nationale Agentur Bildung für Europa**

Follow us: #ErasmusPlus #EPALE #AgendaErwachsenenbildung

Also visit us at



[www.na-bibb.de/en](http://www.na-bibb.de/en)

Subscribe to the NA newsletter:  
[www.na-bibb.de/newsletter](http://www.na-bibb.de/newsletter)